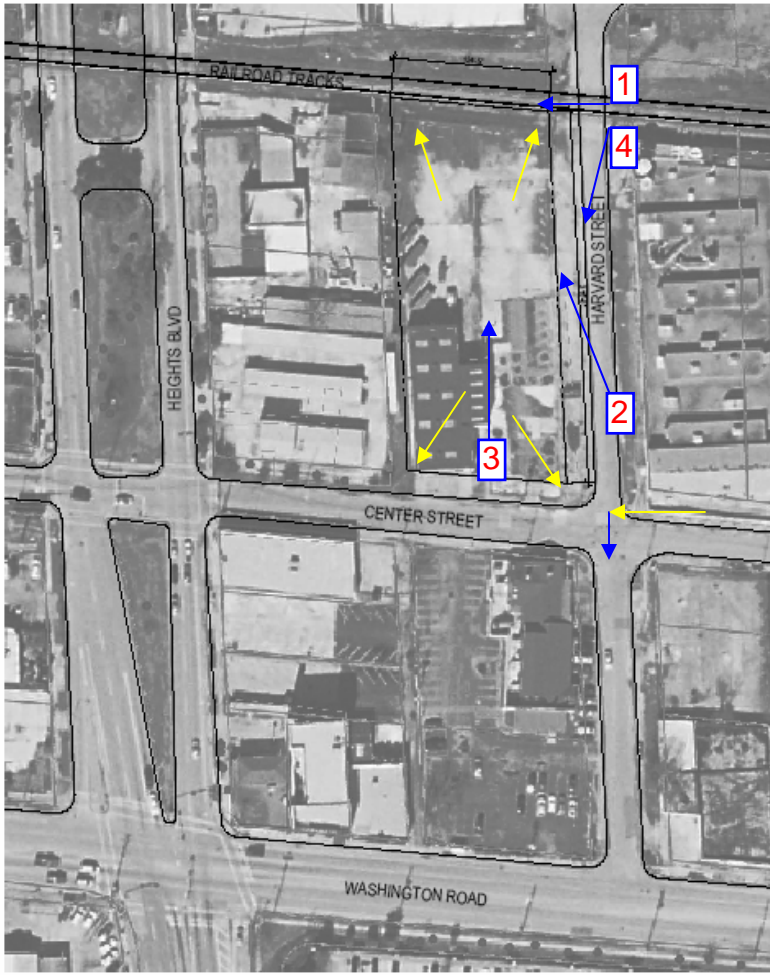


## Site

The site is a 2 acre empty lot, adjacent to a functioning rail line, new residential townhomes, a 2 lane residential street and is 1 block off 2 major streets, Washington Road which runs east west, and Heights Blvd, which runs north-south. This site is @ 134'-0" x 316'-0" much larger than previous projects. How you address the site, in relation to the program and to the sustainable design concepts will be evaluated, by the judges.





# 2008 Michael G. Meyers High School Design Competition

Community Recycling and Reuse Center

## SITE PHOTOS



**Panorama of Site  
View from Center St.**

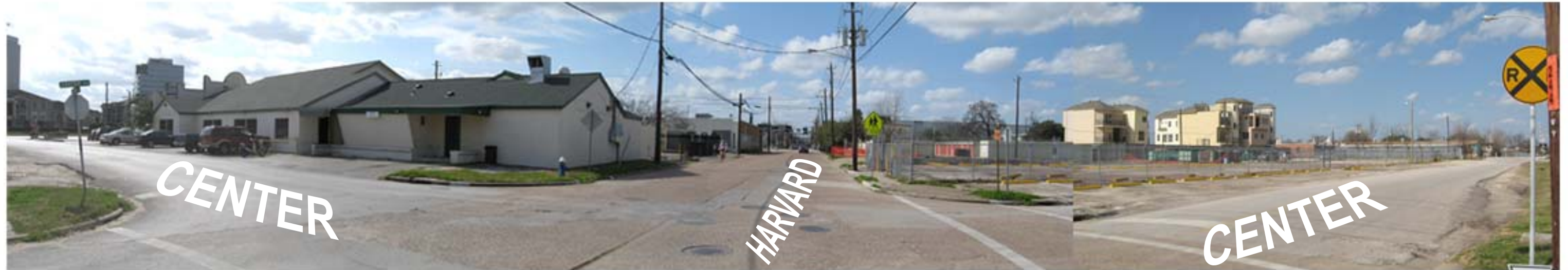


**Panorama of Site  
View from Harvard St.**

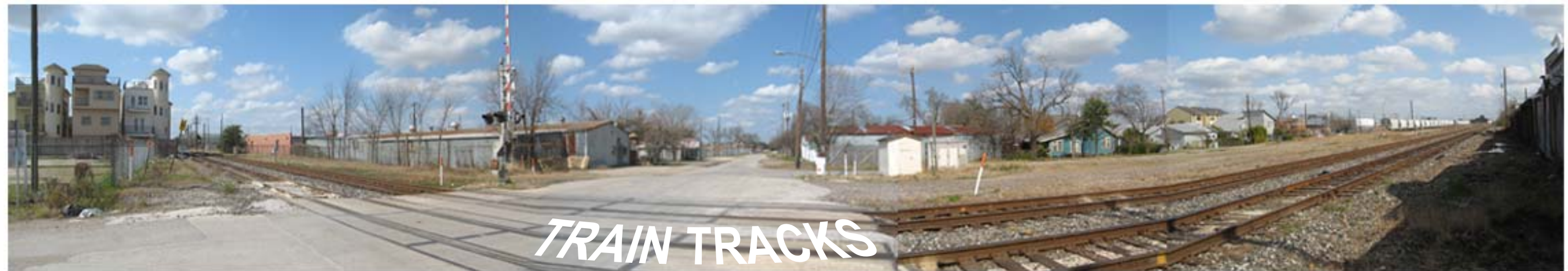
# 2008 Michael G. Meyers High School Design Competition

Community Recycling and Reuse Center

## SITE PHOTOS



**Panorama of Site**  
**View from Center St. at Harvard St.**



**Panorama of Site**  
**View from Train Tracks**